

# ART LOEB



There are many builders that can build a house, but at Osada Construction we pride ourselves on building you a home. Our talented, experienced and creative team has streamlined the building process and ability to capture your dream and turn it into a reality. Osada's craftsmanship, attention to detail and quality, along with our integrity, values and relentless commitment to innovation, allows us to transform the way our clients live. Blending energy-efficient technology, sustainable building materials and magnificent design, we produce beautiful, high-performance healthy homes with more comfortable living space. Ultimately, our goal is to surpass the expectations of our customers from the beginning stages of a project through completion and beyond. Your vision is our vision. Contact us today and let us help you create your dream home.



SOUTHCLIFF®

# ART LOEB

BY OSADA CONSTRUCTION

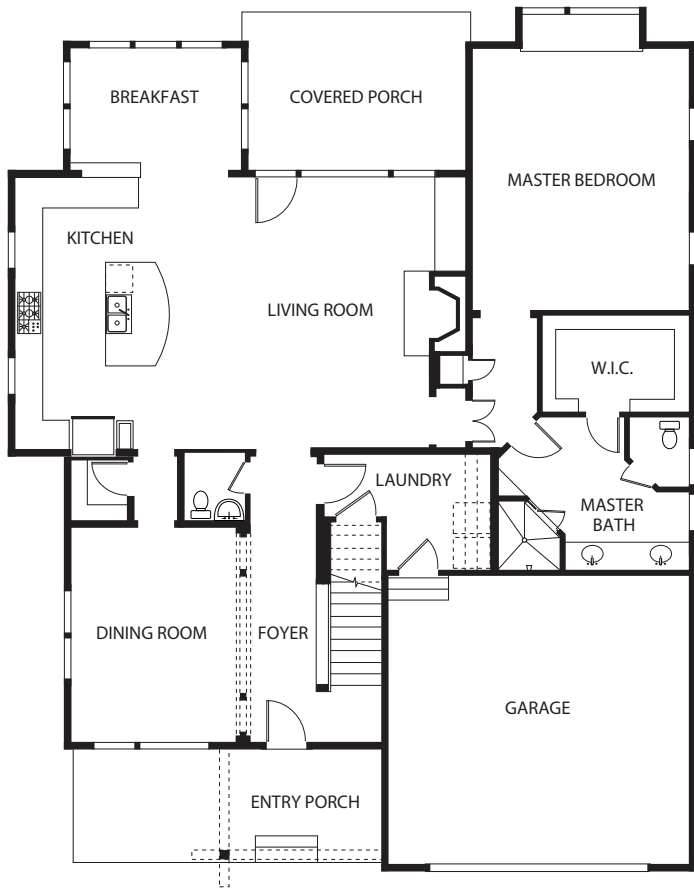
This home, the Art Loeb, is a Mountain Craftsman style with a square footage of 2,813 and is named after a 30-mile trail in the Pisgah National Forest. The trail was named after Art Loeb; a man who “deeply loved these mountains”.

The Art Loeb exemplifies mountain living. Just like the trail that covers peaks and mountain tops, and the man who so deeply loved these mountains.

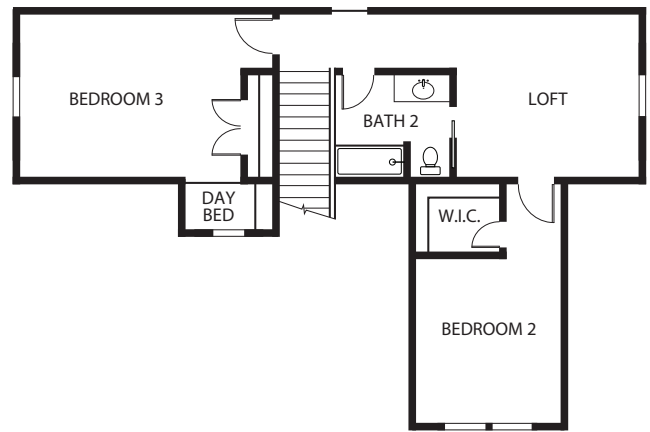
## UNIQUE FEATURES

- Mountain Craftsman Design
- Open Floor Plan
- Master on Main
- Stainless Steel Appliances
- Hardwood Flooring
- 5” LED Can Lights
- Gas Fireplace
- Granite Countertops
- Green Home
- NC Healthy Built Certified
- Craftsmanship
- Quality Build

## FLOOR PLAN



FIRST LEVEL



SECOND LEVEL

### HEATED/FINISHED:

First Floor: 2,028 Sq. Ft.  
 Second Floor: 785 Sq. Ft.

Total: 2,813 Sq. Ft.

Front Porch: 185 Sq. Ft.  
 Covered Porch: 184 Sq. Ft.  
 Garage: 484 Sq. Ft.

Total: 3,666 Sq. Ft.

